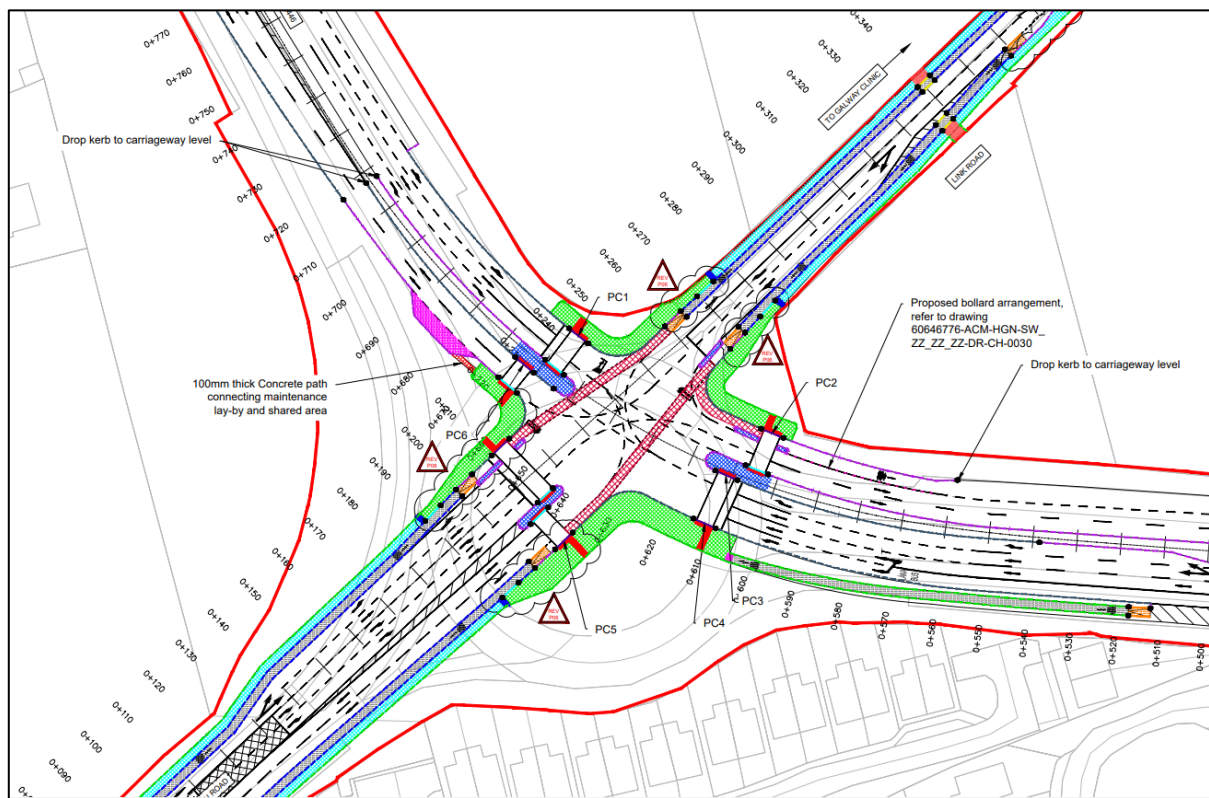


## Martin Junction Upgrade Progress Update October 2022

Fox Building & Engineering Ltd (FBEL) would like to thank local residents and businesses for your patience while we continue works on the Martin Junction upgrade project on behalf of Galway City Council. While heavy challenges have been encountered on this project, we are endeavouring to complete the project in a safe and timely manner, ensuring a quality project is delivered.

The replacement of the roundabout with a signalised junction will provide an enhanced and safer pedestrian and cycling friendly environment, and enhanced public transport facilities through the junction. It will also connect Roscam and Doughiska to the Galway Clinic.



**Proposed Layout of new Martin Junction**

There have been delays to the programme as a result of various issues, including industry wide supply chain and resource issues, additional works such as additional drainage and boundary treatments and challenges relating to rock being encountered on site. Rock was expected, however the hardness of the rock has been much greater than anticipated and as such, has been slower to break and excavate on site.

Works undertaken in the initial months have comprised of mainly heavy underground infrastructure.

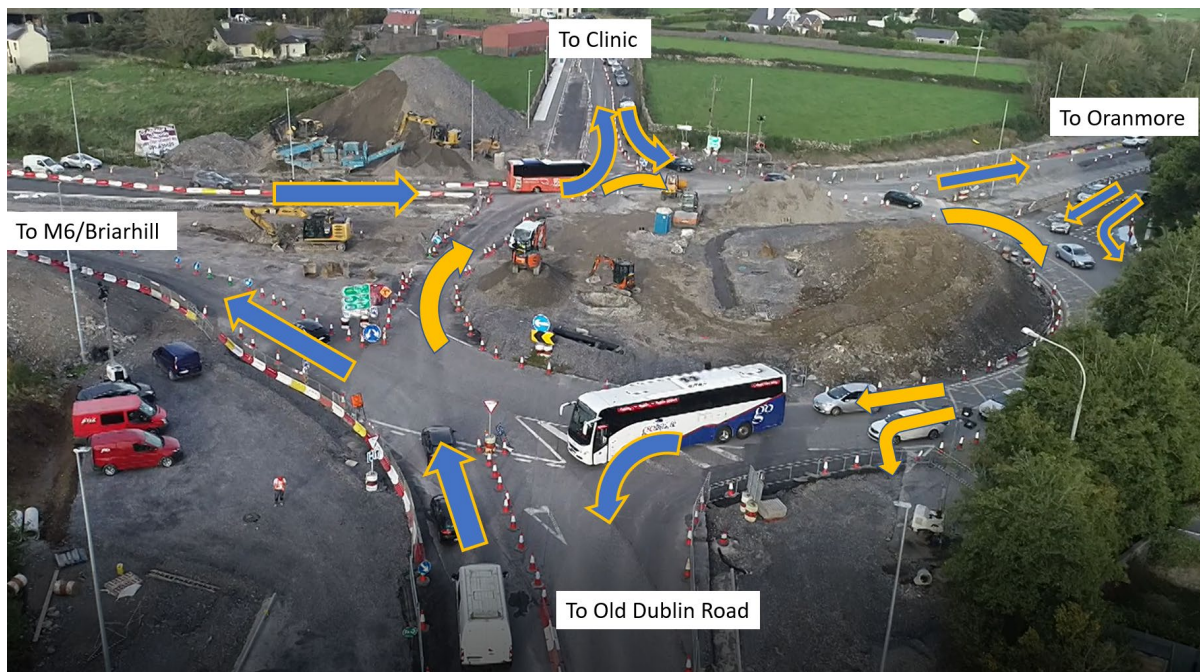
Works have included:

- 1.5km of drainage up to 1800mm diameter installed at depths up to 6.5m deep
- 2.5km+ of utility/service ducting
- 3000 tonnes of rock broken out
- 133m of reinforced concrete retaining wall along boundary with Durabhán

Ongoing works will progress with above ground elements of the junction upgrade, moving from the existing roundabout alignment to the new 4-arm signalised junction layout. In order to facilitate this transition, there will continue to be significant Temporary Traffic Management on the scheme until the project is completed. The current programmed completion date is December 2022.

The programme over the coming weeks is designed so that Temporary Traffic Management will be sequenced, to progress works on all four arms of the new proposed junction. The upcoming works includes:

- Kerbing
- Traffic signal infrastructure and testing
- Public lighting columns
- Footpaths and cycle lanes
- Fencing
- New road pavement
- Landscaping



**Current Traffic Management Layout**

As each phase progresses, changes in the road layout are to be expected. Fox Building & Engineering Ltd will work to optimise traffic flows through the junction in order to minimise delays, while maintaining safe passage through the works for the travelling public, and to ensure the safety of our construction team working on the project.

If you have any queries please contact Fox Building & Engineering Ltd Liaison officer using the number below:

- Liaison Officer (Conán Brady) contact: **087 709 4491**

For further updates on this project please refer to [www.galwaycity.ie/martinjunction](http://www.galwaycity.ie/martinjunction)

Yours Faithfully,

Fox Building and Engineering Ltd.